



ENVIRO TRACE



INFRARED LEAK DETECTION



FAST AND EFFICIENT LEAK DETECTION USING INFRARED SCANNING

Enviro Trace can now offer a unique service to safely and efficiently identify stray gas emissions over a wide range of Oil and Gas facilities.

Enviro Trace utilizes the GasFindIR™ infrared camera manufactured by Flir Systems, the world's largest infrared camera producer.

IR scanning is fast and efficient; quickly scan piping within a plant. Scan thousands of items in a day. Eliminate labour intensive soap bubble or gas sniffer testing in difficult to reach or hazardous areas. The video image helps to identify the precise component that is leaking saving time and maintenance costs.

Enviro Trace can scan your plant to verify compliance with Directive 60. We can scan your facility, tag any leaks, and then supply you with the video of all leaking components allowing you to perform a risk assessment to determine what action is required.

Once maintenance has been completed we can quickly re-scan to confirm that repairs have been completed.

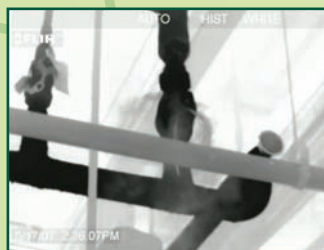


GasFindIR™ camera: 10" x 5.2" x 5.7"; 4.6 lbs.

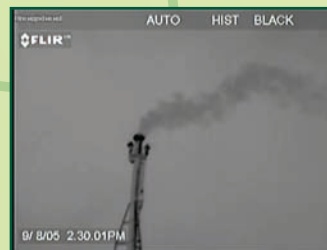
ACTUAL INFRARED IMAGES



Leaking Elbow



Leaking Union



Flare Stack Plume



IR Detected Plume



**Visit our web site www.envirotrace.ca to see
videos of GasFindIR™ in actual testing situations.**



Enhance safety by scanning overhead piping from ground level.



Scan in tight areas and pinpoint leaking components.



A leak that is in the back of, or behind a component may still be visible to the camera



Accurately identify leaks in complex systems.



Quickly scan inside compressor buildings, inlet and treater buildings.

Flexibility

The GasfindIR™ has three available lens sizes: 25mm, 50mm and 100mm, which allows Enviro Trace to adapt the camera to your specific requirements.

Capabilities

- Identify small leaks from a few feet away.
- Scan in congested areas, or scan dangerous leaks, all from a safe distance.
- Scan a moving target or scan from a moving vehicle.
- Scans are easily downloaded to a video recorder and can be emailed.
- Videos can be used for documentation purposes or to assist maintenance personnel in planning repairs.
- View images in real time.



Scan elevated positions from ground level and reduce the use of lifts and related equipment.

GasFindIR™

Scans for the following gases:

Benzene	Methanol
Butane	MIBK
Ethane	Octane
Ethylbenzene	Pentane
Ethylene	1-Pentane
Heptane	Propane
Hexane	Propylene
Isoprene	Toluene
MEK	Xylene
Methane	



Enviro Trace can scan the following components:

Wellhead	Welds	Couplings
Sucker rod packing	Joints	Unions
Flanges	Pipelines	Oil production battery
Valves	Compressors	Reclaiming plants
Elbows	Industrial plants	

Enviro Trace Ltd.
70 Riel Drive
St. Albert, AB. T8N 4A6

**ENVIRO TRACE**

(780) 418-0882
(780) 418-0886 Fax
envirot@envirotrace.ca

www.envirotrace.ca

